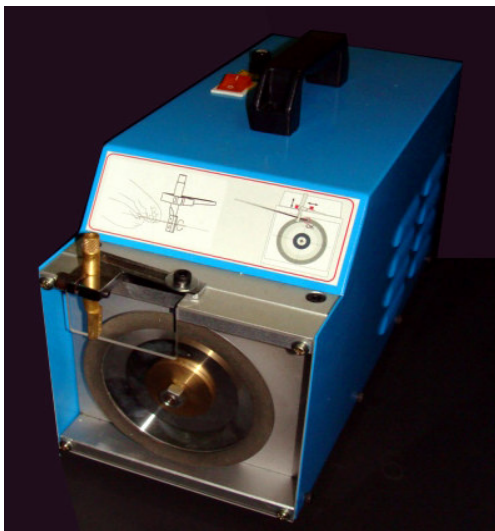


# Tungsten Electrode Grinder

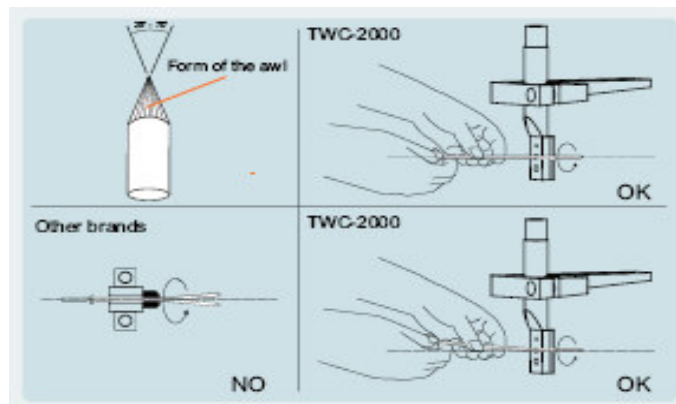


## Specification

Model	TG-2000C1	TG-2000C2
Input Power	110V/7A 60Hz	230V/5A 50Hz
Output power	0.5 HP/3200RPM	0.5HP/2900RPM
Grinding wheel size	Dia 152 mm	
Type of wheel	Diamonds SDC150N75B	
Grind effective width	12mm	
Grind angle	25° - 70°	
Tungsten size	1.6mm; 2.4mm; 3.2mm	
Dimension	L39cm x W18cm x H25cm	
Weight	N.W 7kg, G.w. 8kg	

### Feature:

1. Transparently acrylic resin board protect the grinding area, easy to operate and safe.
2. Grinding wheel with density #100 particle diamonds powder, to make the tungsten electrode is smooth tread, easy start arc.
3. A fixture with 5° angle setting to guide the tungsten electrode diameter 1.6mm; 2.4mm & 3.2mm for easy to do the job.



Please contact :