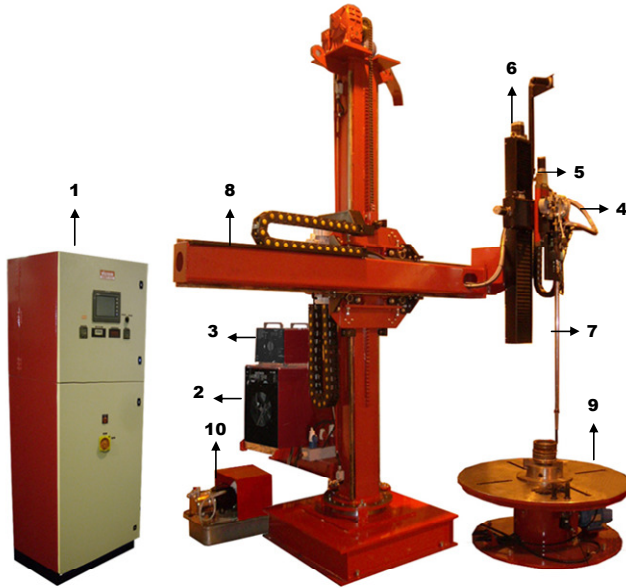


HW-TIG Cladding System

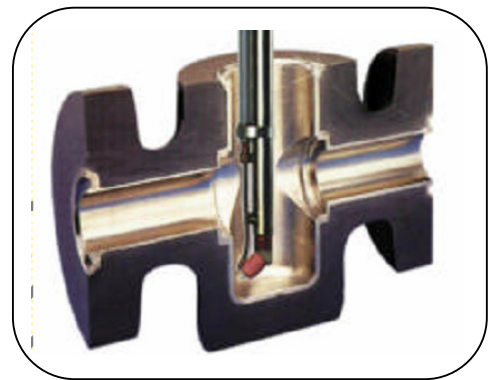


Modules included

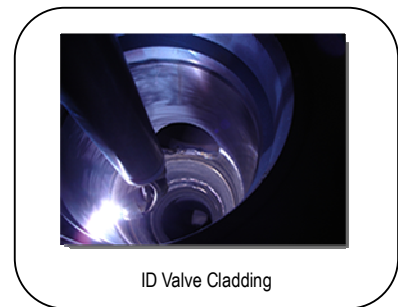
- ✓ Main Control with GSK-V2 Software
- ✓ TIG Power Source
- ✓ Hot Wire power Source
- ✓ Wire Feeder
- ✓ Auto Arc Height Control
- ✓ Indexing Z-axis
- ✓ Water cool long torch for heavy duty cladding
- ✓ Column & Boom
- ✓ Rotating Table
- ✓ Water Cooling Unit

HOT-WIRE TIG Valve Cladding System

provides an automated economical solution for valve cladding welding operation. Each of the modules of the system is finely structured and machined to achieve performance with high accuracy, ease of operation and flexibility. This system is designed for cladding valves ; Bonnet & Connectors.... from 50mm ID and above with a load capacity of 5,000 Kg.



| Description | Specifications |
|---------------------|---|
| Model | V2-9000 HWT |
| Welding Process | Pulse TIG for Inconel 625 (NiCrMo-3) wire |
| Welding Speed | ~ 35 – 45 Cm/min |
| Min. ID | 50 mm |
| Max. Working Length | 1500 mm |
| Deposition rate | ~ 1.7 – 2.5 Kg/hour |
| Input supply | AC 415V- 3ph – 50 Hz |



Note: Due to the continuous improvements of our products, the design and specifications are subjected to change without prior notice