

WVW-2LC Automatic tank vertical welder

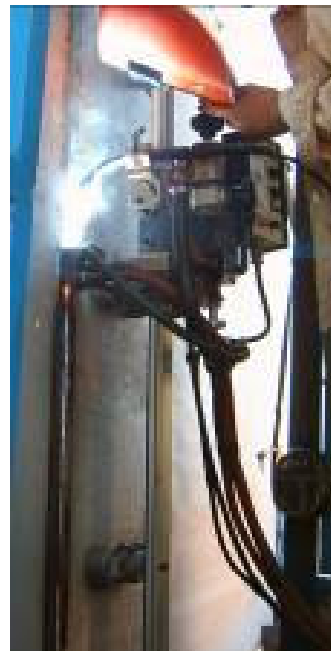
Feature: *The WVW-2LC – Single pass automatic vertical-up welding system, provides high x-ray quality welds & can weld vertical shell plate seams at 30 time faster than the manual electrode welding.*

The system consist of a sturdy main frame structure; travel carriage & rail; water cooling circular tank; auto function control; wire feeder; torch weaving device. The system will provide a safty; convvenience; reliable & time saving working enviroment for the operator to do the job.

The WVW-2LC methods for field construction of storage tanks and in-plant fabrication of butt welds requiningout of position vertical seam welding.



Overall view of system



Welding on process

Specification :

- | | | | |
|-----------------------|------------------------------|------------------------|--------------------------|
| 1) Plate thickness | : 8 -50mm | 9) Flux core wire dia. | : 1.6mm |
| 2) Type of plate | : All kind of steel material | 10) Colling methode | : Water 8m3 / hr |
| 3) Type of bever | : V or X | 11) Torch position | : 5 Axis adjustable |
| 4) Welding position | : Vertical butt | 12) Weaver position | : 4 parameter |
| 5) Plate width | : 1.5 – 2.6meter | 13) Welding speed | : auto feed back control |
| 6) Min. tank diameter | : 5 m above | 14) Rapid speed | : 3,000 mm/min |
| 7) Welding current | : 300 – 500A | 15) Type of gas | : CO2, 30L/min |
| 8) Welding Voltage | : 20 – 40V | 16) Input voltage | : AC 415V |